

DESIGN FIRST.

Sq

wa

re

—

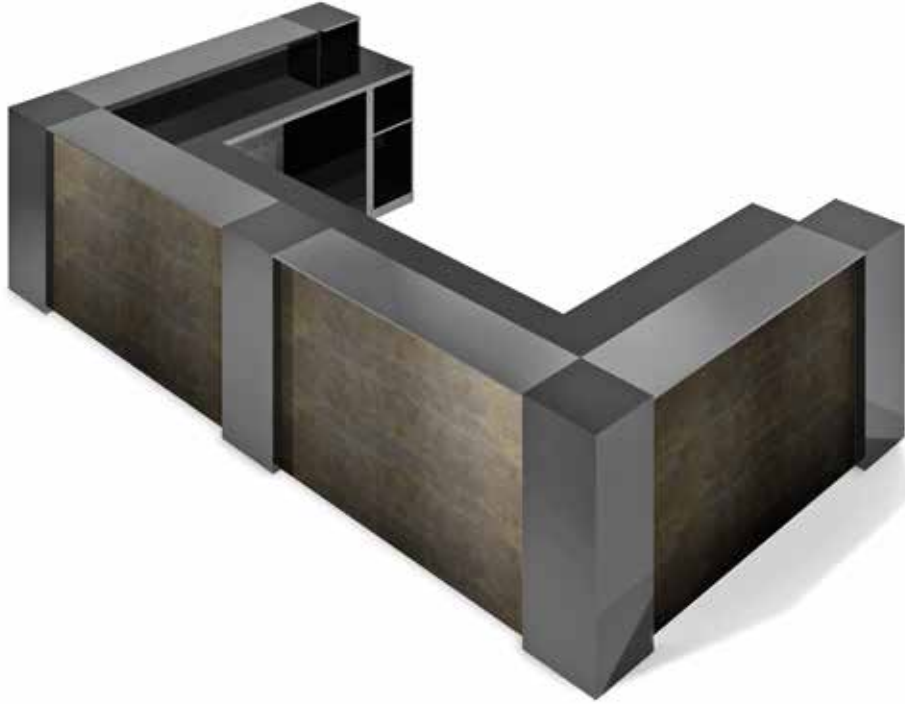
fit interiors

Square

Italiano	3
English	6
Deutsch	9
Français	12
Español	15

Square

Bancone modulare in MFC e laminato con luci LED.



Struttura

Finiture



THE SWATCH BOOK

Piano di lavoro

Finiture



Antracite



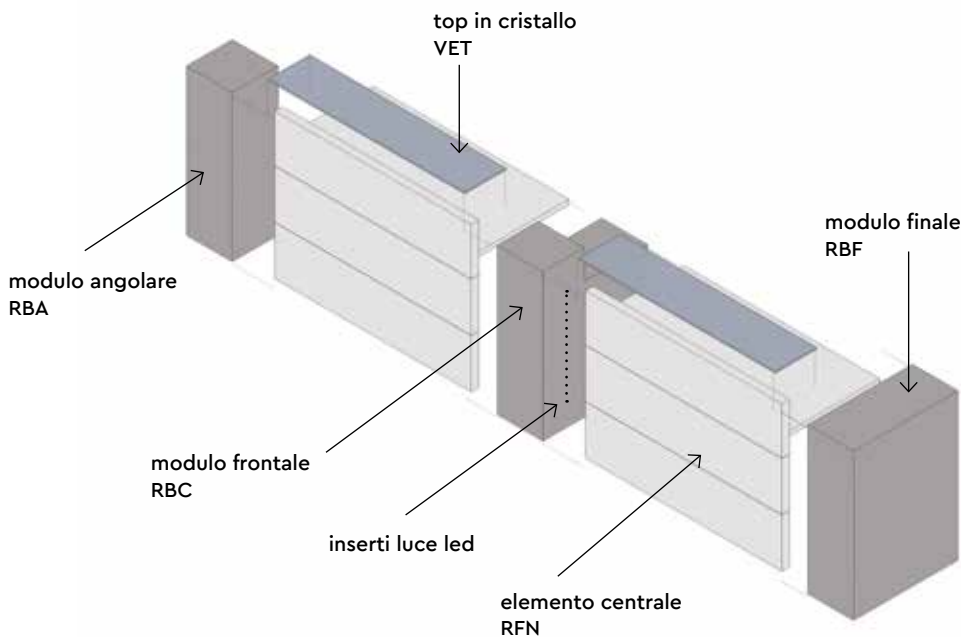
Cachemire



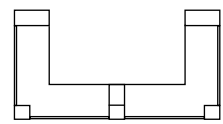
Nero opaco



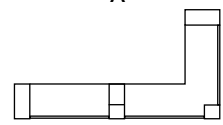
Bianco opaco



Alcune possibili combinazioni



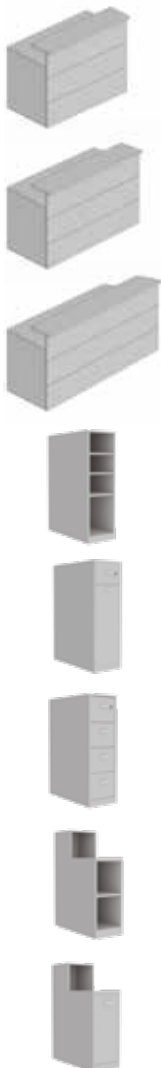
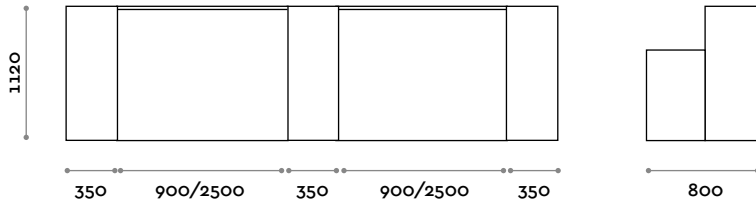
A



B



C



RFN001

Fronte con top in nobilitato. Altezza piano di lavoro 778 mm / 918 mm
L 900-1300 mm / P 800 mm / H 1120 mm

RFN002

Fronte con top in nobilitato. Altezza piano di lavoro 778 mm / 918 mm
L 1301-1900 mm / P 800 mm / H 1120 mm

RFN003

Fronte con top in nobilitato. Altezza piano di lavoro 778 mm / 918 mm
L 1901-2500 mm / P 800 mm / H 1120 mm

RBF001

Modulo finale in laminato con vani a giorno e due ripiani mobili
L 350 mm / P 800 mm / H 1120 mm

RBF002

Modulo finale in laminato con 1 cassetto ed 1 anta con ripiano interno mobile
L 350 mm / P 800 mm / H 1120 mm

RBF003

Modulo finale in laminato con 4 cassette
L 350 mm / P 800 mm / H 1120 mm

RBC001

Modulo centrale in laminato con vani a giorno e ripiano mobile
L 350 mm / P 800 mm / H 1120 mm

RBC002

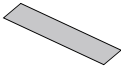
Modulo centrale in laminato, 1 vano a giorno e 1 anta con ripiano interno mobile
L 350 mm / P 800 mm / H 1120 mm

**RBC003**

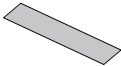
Modulo centrale in laminato con 1 vano a giorno e 3 cassetti
L 350 mm / P 800 mm / H 1120 mm

**RBA001**

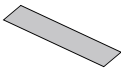
Modulo per angolo chiuso in laminato
L 350 mm / P 350 mm / H 1120 mm

**VET001**

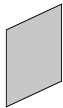
Top in vetro temperato retrolaccato
L 900 - 1300 mm / P 350 mm / H 12 mm

**VET002**

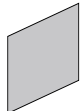
Top in vetro temperato retrolaccato
L 1301 - 1900 mm / P 350 mm / H 12 mm

**VET003**

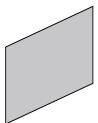
Top in vetro temperato retrolaccato
L 1901 - 2500 mm / P 350 mm / H 12 mm

**LOG100**

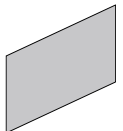
Vetro frontale con logo serigrafato cm 100
L fino a 1000 mm / P 18 mm / H 1120 mm

**LOG150**

Vetro frontale con logo serigrafato cm 150
L 1001 - 1500 mm / P 18 mm / H 1120 mm

**LOG200**

Vetro frontale con logo serigrafato cm 200
L 1501 - 2000 mm / P 18 mm / H 1120 mm

**LOG250**

Vetro frontale con logo serigrafato cm 250
L 2001 - 2500 mm / P 18 mm / H 1120 mm

**RGB250**

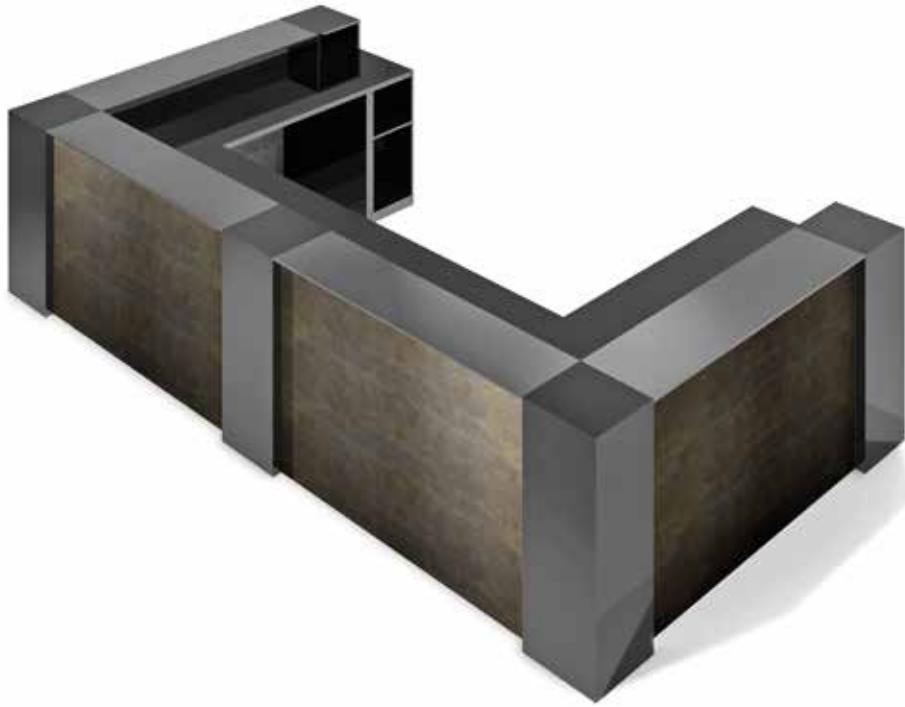
Led RGB sui due lati della torretta
(R) 4,8W per metro, 12 V

**LED250-24**

Led sui due lati della torretta IP20
(C) 6000 K / 4,8W per metro, 24 V
(N) 4000 K / 4,8W per metro, 24 V
(N) 3000 K / 4,8W per metro, 24 V

Square

Modular counter made of MFC and laminate with LED lighting.



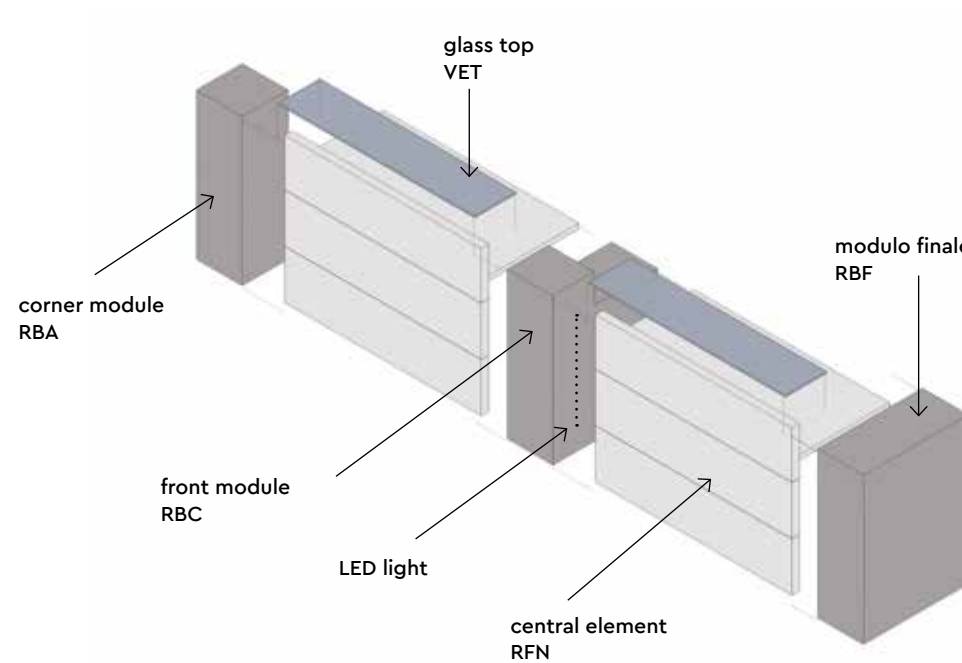
Structure

Finishes

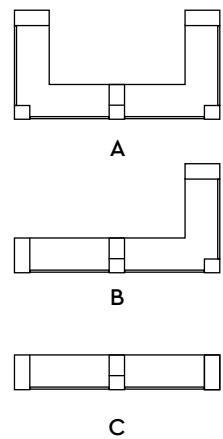


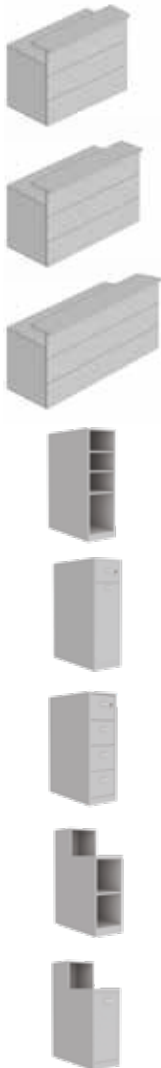
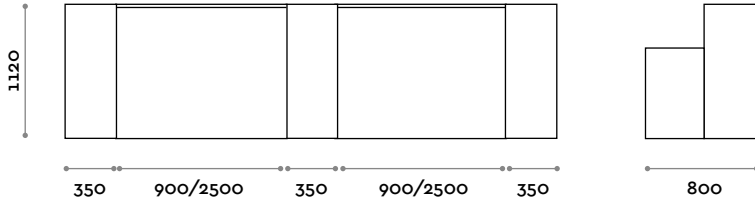
Worktop

Finishes



Example compositions





RFN001

Front and top made in MFC. Worktop height 778 mm / 918 mm
W 900-1300 mm / D 800 mm / H 1120 mm

RFN002

Front and top made in MFC. Worktop height 778 mm / 918 mm
W 1301-1900 mm / D 800 mm / H 1120 mm

RFN003

Front and top made in MFC. Worktop height 778 mm / 918 mm
W 1901-2500 mm / D 800 mm / H 1120 mm

RBF001

Laminate end tower with open compartments and two removable shelves
W 350 mm / D 800 mm / H 1120 mm

RBF002

Laminate end tower with 1 drawer and 1 door with removable shelf inside
W 350 mm / D 800 mm / H 1120 mm

RBF003

Laminate end tower with 4 drawers
W 350 mm / D 800 mm / H 1120 mm

RBC001

Laminate central tower with open compartments and removable shelf
W 350 mm / D 800 mm / H 1120 mm

RBC002

Laminate central tower with 1 drawer and 1 door with removable shelf inside
W 350 mm / D 800 mm / H 1120 mm



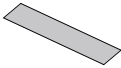
RBC003

Laminate central tower with 1 open compartment and 3 drawers
W 350 mm / D 800 mm / H 1120 mm



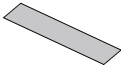
RBA001

Laminate corner tower
W 350 mm / D 350 mm / H 1120 mm



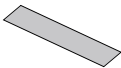
VET001

Top in tempered backlaquered glass
W 900 - 1300 mm / D 350 mm / H 12 mm



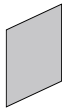
VET002

Top in tempered backlaquered glass
W 1301 - 1900 mm / D 350 mm / H 12 mm



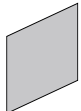
VET003

Top in tempered backlaquered glass
W 1901 - 2500 mm / D 350 mm / H 12 mm



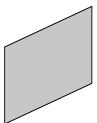
LOG100

Front glass with logo cm 100
W up to 1000 mm / D 18 mm / H 1120 mm



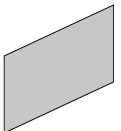
LOG150

Front glass with logo cm 150
W 1001 - 1500 mm / D 18 mm / H 1120 mm



LOG200

Front glass with logo cm 200
W 1501 - 2000 mm / D 18 mm / H 1120 mm



LOG250

Front glass with logo cm 250
W 2001 - 2500 mm / D 18 mm / H 1120 mm



RGB250

RGB LED lights on both sides of tower
(R) 4,8W per meter, 12 V

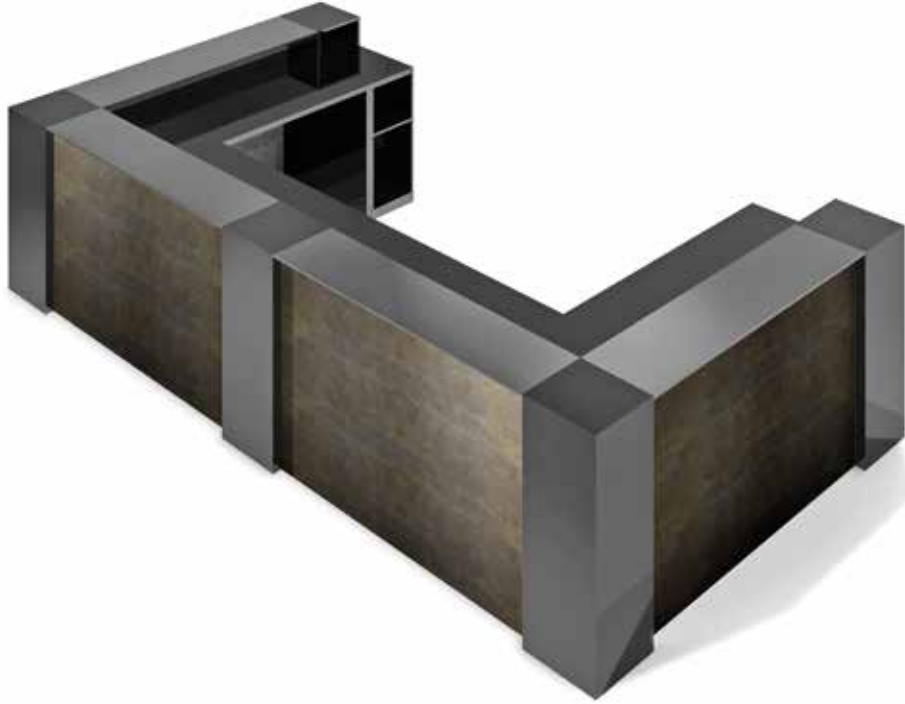


LED250-24

LED lights on both sides of tower IP20
(C) 6000 K / 4,8W per meter, 24 V
(N) 4000 K / 4,8W per meter, 24 V
(N) 3000 K / 4,8W per meter, 24 V

Square

Modulare Theke aus MFC und Laminat mit LED-Beleuchtung.



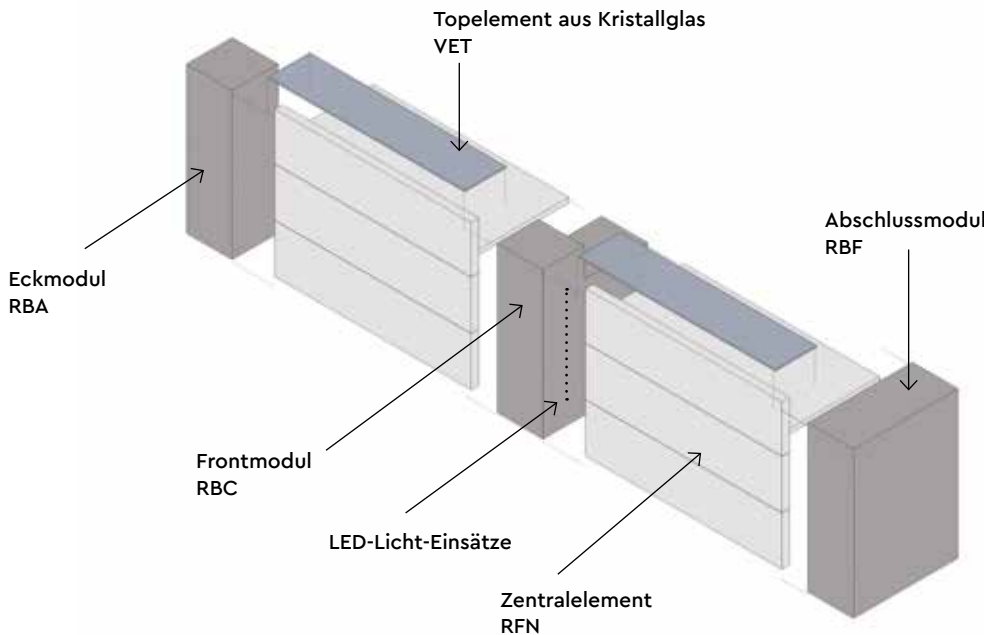
Struktur

Ausführungen

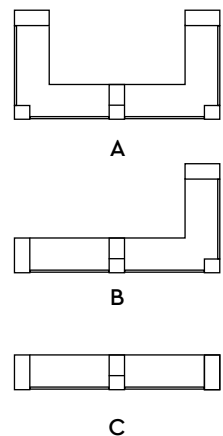


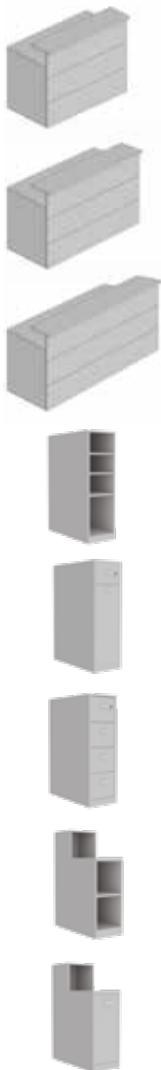
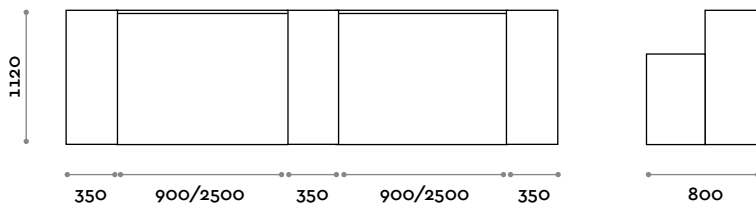
Arbeitsplatte

Ausführungen



Einige mögliche Kombinationen



**RFN001**

Frontelement und Arbeitsfläche furniert. Arbeitsplattenhöhe 778 mm / 918 mm
B 900-1300 mm / T 800 mm / H 1120 mm

RFN002

Frontelement und Arbeitsfläche furniert. Arbeitsplattenhöhe 778 mm / 918 mm
B 1301-1900 mm / T 800 mm / H 1120 mm

RFN003

Frontelement und Arbeitsfläche furniert. Arbeitsplattenhöhe 778 mm / 918 mm
B 1901-2500 mm / T 800 mm / H 1120 mm

RBF001

Abschlussmodul aus Laminat mit Stauräumen und zwei beweglichen Innenborden
B 350 mm / T 800 mm / H 1120 mm

RBF002

Abschlussmodul aus Laminat mit 1 Schublade, 1 Tür und beweglichem Innenbord
B 350 mm / T 800 mm / H 1120 mm

RBF003

Abschlussmodul aus Laminat mit 4 Schubladen
B 350 mm / T 800 mm / H 1120 mm

RBC001

Zentralmodul aus Laminat mit Stauräumen und beweglichem Innenbord
B 350 mm / T 800 mm / H 1120 mm

RBC002

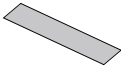
Zentralmodul aus Laminat mit 1 Stauraum, 1 Tür und beweglichem Innenbord
B 350 mm / T 800 mm / H 1120 mm

**RBC003**

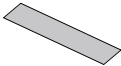
Zentralmodul aus Laminat mit 1 Stauraum und 3 Schubladen
B 350 mm / T 800 mm / H 1120 mm

**RBA001**

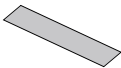
Geschlossenes Eckmodul aus Laminat
B 350 mm / T 350 mm / H 1120 mm

**VET001**

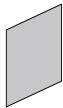
Topelement aus gehärtetem, rückseitig lackiertem Glas
B 900 - 1300 mm / T 350 mm / H 12 mm

**VET002**

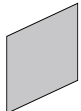
Topelement aus gehärtetem, rückseitig lackiertem Glas
B 1301 - 1900 mm / T 350 mm / H 12 mm

**VET003**

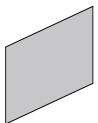
Topelement aus gehärtetem, rückseitig lackiertem Glas
B 1901 - 2500 mm / T 350 mm / H 12 mm

**LOG100**

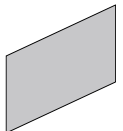
Frontglas mit Logo cm 100
B bis 1000 mm / T 18 mm / H 1120 mm

**LOG150**

Frontglas mit Logo cm 150
B 1001 - 1500 mm / T 18 mm / H 1120 mm

**LOG200**

Frontglas mit Logo cm 200
B 1501 - 2000 mm / T 18 mm / H 1120 mm

**LOG250**

Frontglas mit Logo cm 250
B 2001 - 2500 mm / T 18 mm / H 1120 mm

**RGB250**

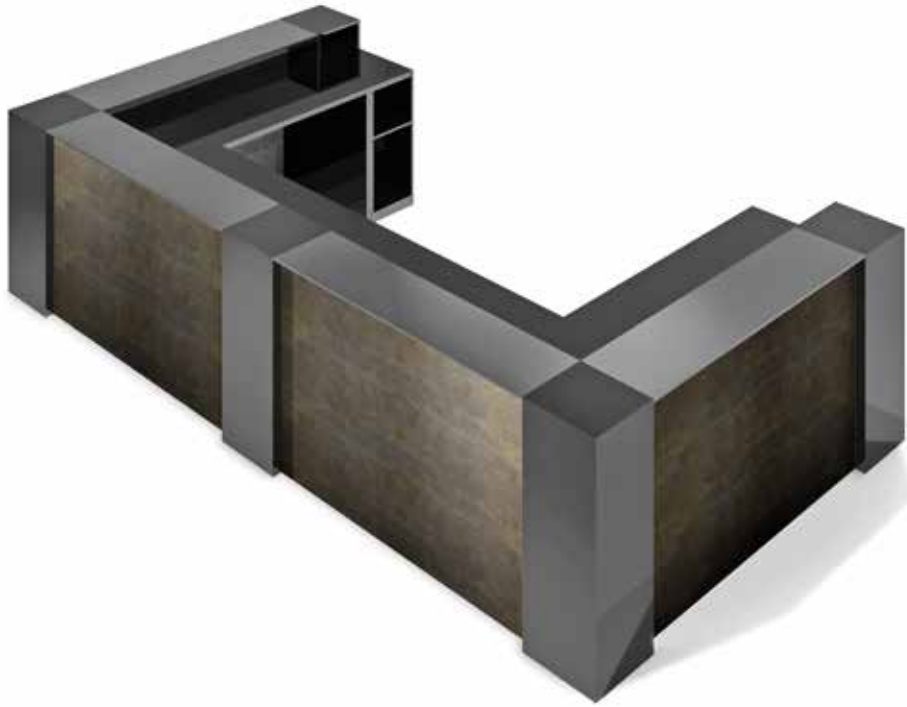
LED RGB für Front- und Eckmodul
(R) 4,8W je Meter, 12 V

**LED250-24**

LED für Front- und Eckmodul IP20
(C) 6000 K / 4,8W je Meter, 24 V
(N) 4000 K / 4,8W je Meter, 24 V
(N) 3000 K / 4,8W je Meter, 24 V

Square

Comptoir modulaire en panneau mélaminé et stratifié avec éclairage LED.



Structure

Finitions



THE SWATCH BOOK

Plan de travail

Finitions



Anthracite



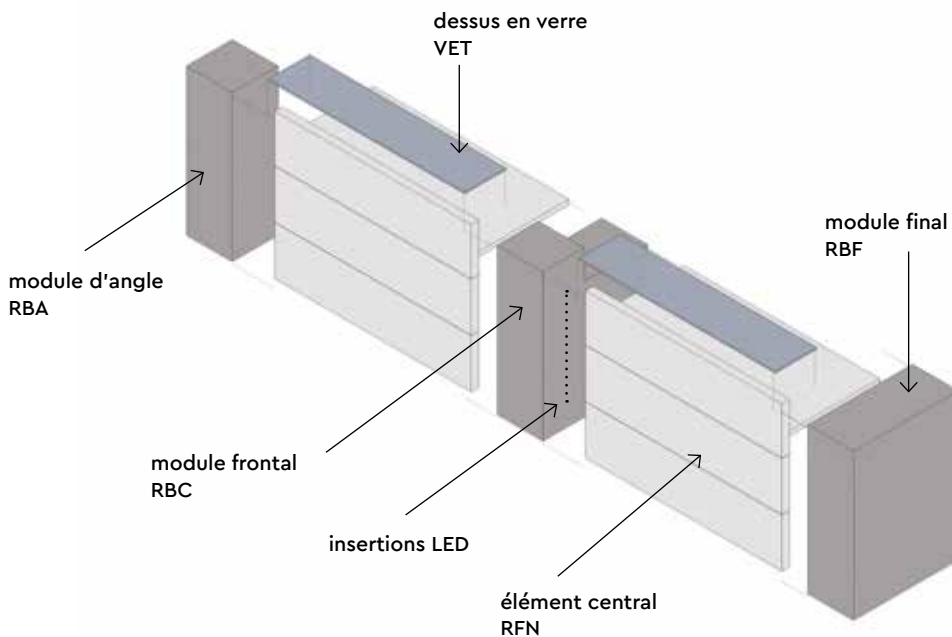
Cachemire



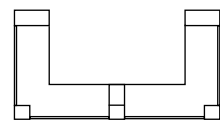
Noir mat



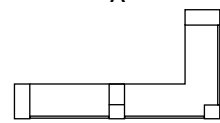
Blanc mat



Quelques combinaisons possibles



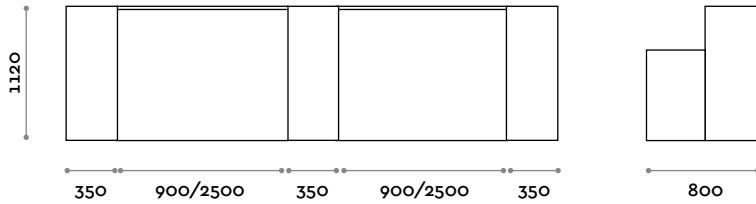
A



B



C

**RFN001**

Façade et plan en mélaminé. Hauteur du plan de travail 778 mm / 918 mm
L 900-1300 mm / P 800 mm / H 1120 mm

**RFN002**

Façade et plan en mélaminé. Hauteur du plan de travail 778 mm / 918 mm
L 1301-1900 mm / P 800 mm / H 1120 mm

**RFN003**

Façade et plan en mélaminé. Hauteur du plan de travail 778 mm / 918 mm
L 1901-2500 mm / P 800 mm / H 1120 mm

**RBF001**

Meuble final en stratifié avec compartiment ouvert et deux tablettes amovibles
L 350 mm / P 800 mm / H 1120 mm

**RBF002**

Meuble final en stratifié avec 1 tiroir et 1 porte avec tablette intérieure amovible
L 350 mm / P 800 mm / H 1120 mm

**RBF003**

Meuble final en stratifié avec 4 tiroirs
L 350 mm / P 800 mm / H 1120 mm

**RBC001**

Meuble central en stratifié avec compartiments ouverts et tablette mobile
L 350 mm / P 800 mm / H 1120 mm

**RBC002**

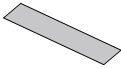
Meuble central en stratifié avec 1 compartiment ouvert et 1 porte avec tablette interne mobile
L 350 mm / P 800 mm / H 1120 mm

**RBC003**

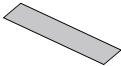
Meuble central en stratifié avec 1 compartiment ouvert et 3 tiroirs
L 350 mm / P 800 mm / H 1120 mm

**RBA001**

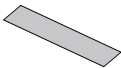
Meuble pour angle fermé en stratifié
L 350 mm / P 350 mm / H 1120 mm

**VET001**

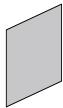
Plateau en verre trempé rétro-laqué
L 900 - 1300 mm / P 350 mm / H 12 mm

**VET002**

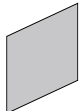
Plateau en verre trempé rétro-laqué
L 1301 - 1900 mm / P 350 mm / H 12 mm

**VET003**

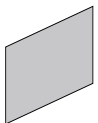
Plateau en verre trempé rétro-laqué
L 1901 - 2500 mm / P 350 mm / H 12 mm

**LOG100**

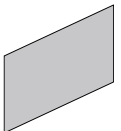
Verre frontal avec logo cm 100
L jusqu'à 1000 mm / P 18 mm / H 1120 mm

**LOG150**

Verre frontal avec logo cm 150
L 1001 - 1500 mm / P 18 mm / H 1120 mm

**LOG200**

Verre frontal avec logo cm 200
L 1501 - 2000 mm / P 18 mm / H 1120 mm

**LOG250**

Verre frontal avec logo cm 250
L 2001 - 2500 mm / P 18 mm / H 1120 mm

**RGB250**

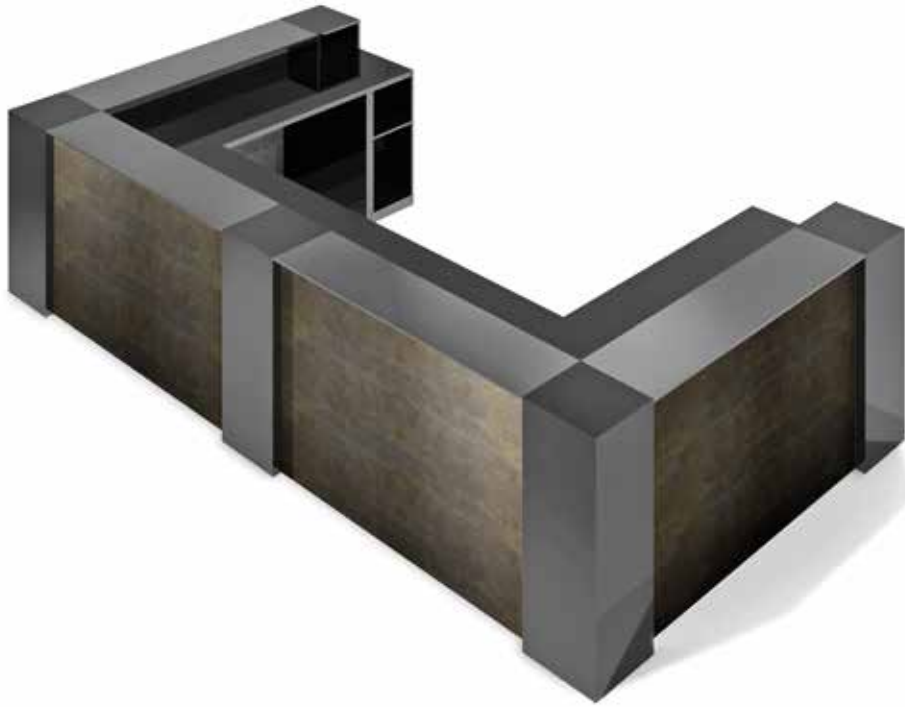
Led RGB pour façade et angle
(R) 4,8W par mètre, 12 V

**LED250-24**

Led pour façade et angle IP20
(C) 6000 K / 4,8W par mètre, 24 V
(N) 4000 K / 4,8W par mètre, 24 V
(N) 3000 K / 4,8W par mètre, 24 V

Square

Mostrador modular de fibra de madera y laminado con luces LED.



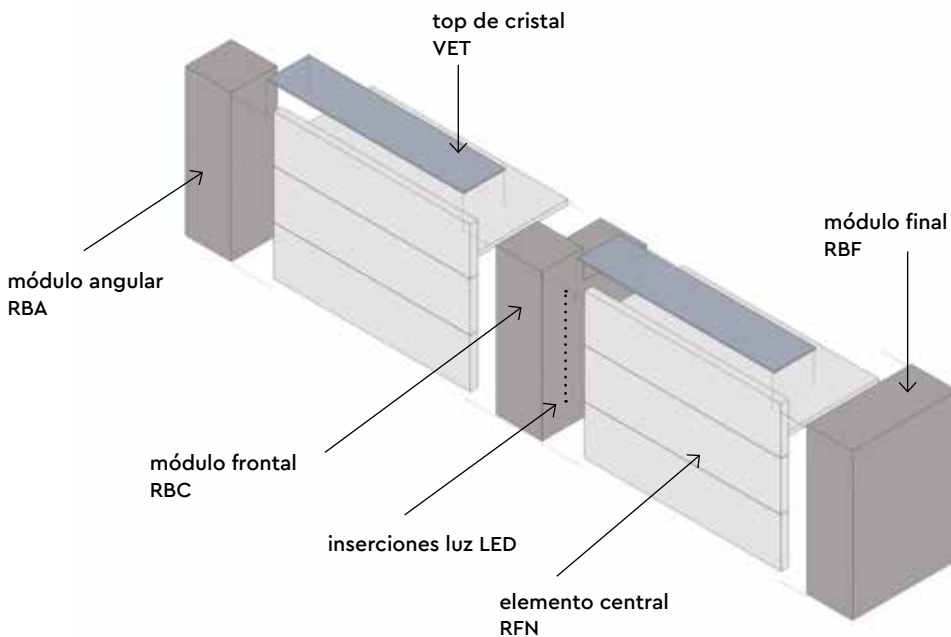
Estructura

Acabados

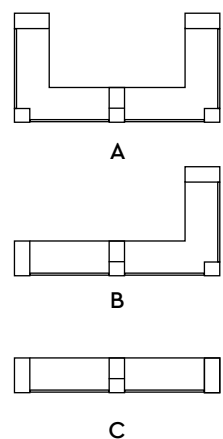


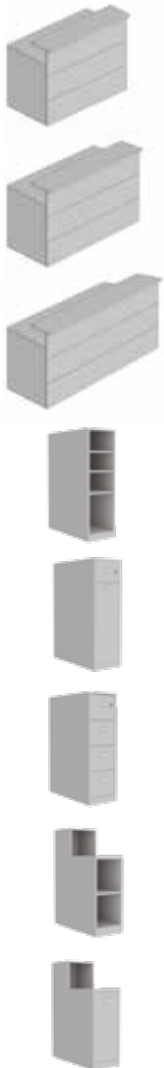
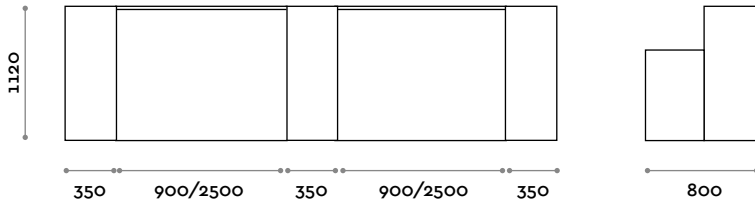
Encimera

Acabados



Varias posibles combinaciones



**RFN001**

Frente de ennoblecido comprendido top de ennoblecido. Altura encimera 778 mm / 918 mm
L 900-1300 mm / P 800 mm / H 1120 mm

RFN002

Frente de ennoblecido comprendido top de ennoblecido. Altura encimera 778 mm / 918 mm
L 1301-1900 mm / P 800 mm / H 1120 mm

RFN003

Frente de ennoblecido comprendido top de ennoblecido. Altura encimera 778 mm / 918 mm
L 1901-2500 mm / P 800 mm / H 1120 mm

RBF001

Baúl final de laminado con huecos abiertos y dos repisas móviles
L 350 mm / P 800 mm / H 1120 mm

RBF002

Baúl final de laminado con un cajón y una hoja con repisa interior móvil
L 350 mm / P 800 mm / H 1120 mm

RBF003

Baúl final de laminado con 4 cajones
L 350 mm / P 800 mm / H 1120 mm

RBC001

Baúl central de laminado con huecos abiertos y repisa móvil
L 350 mm / P 800 mm / H 1120 mm

RBC002

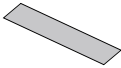
Baúl central de laminado con un hueco abierto y una hoja con repisa interior móvil
L 350 mm / P 800 mm / H 1120 mm

**RBC003**

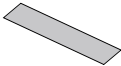
Baúl central de laminado con un hueco abierto y 3 cajones
L 350 mm / P 800 mm / H 1120 mm

**RBA001**

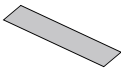
Baúl para ángulo cerrado de laminado
L 350 mm / P 350 mm / H 1120 mm

**VET001**

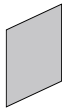
Top de vidrio templado lacado en la parte de atrás
L 900 - 1300 mm / P 350 mm / H 12 mm

**VET002**

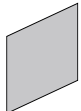
Top de vidrio templado lacado en la parte de atrás
L 1301 - 1900 mm / P 350 mm / H 12 mm

**VET003**

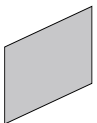
Top de vidrio templado lacado en la parte de atrás
L 1901 - 2500 mm / P 350 mm / H 12 mm

**LOG100**

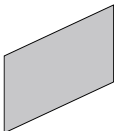
Vidrio frontal con logo cm 100
L fino a 1000 mm / P 18 mm / H 1120 mm

**LOG150**

Vidrio frontal con logo cm 150
L 1001 - 1500 mm / P 18 mm / H 1120 mm

**LOG200**

Vidrio frontal con logo cm 200
L 1501 - 2000 mm / P 18 mm / H 1120 mm

**LOG250**

Vidrio frontal con logo cm 250
L 2001 - 2500 mm / P 18 mm / H 1120 mm

**RGB250**

LED RGB para partes frontal y angular
(R) 4,8W por metro, 12 V

**LED250-24**

LED para partes frontal y angular IP20
(C) 6000 K / 4,8W por metro, 24 V
(N) 4000 K / 4,8W por metro, 24 V
(N) 3000 K / 4,8W por metro, 24 V

follow us



**fit
interiors**

**furniture for gyms,
health and golf clubs,
spa&wellness, hotel,
medical and corporate**

visit www.fitinteriors.com